



Web 2.0 Menus: Image Map Hotspots

WEB 2.0 MENUS: IMAGE MAP HOTSPOTS



FINDING THE IMAGE MAP HOTSPOTS

Gimp® has a built-in tool that defines the coordinates for a hotspot and writes the code.

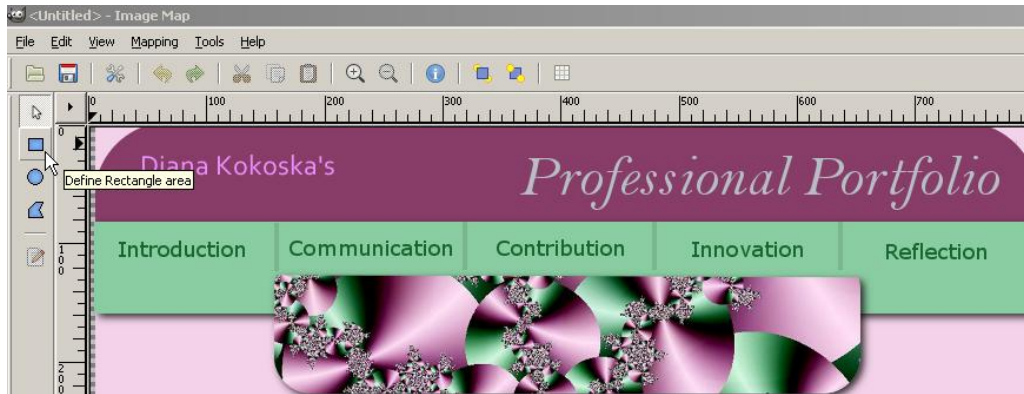
Before you begin, open a text editor and create five Web pages named `introduction.html`, `communication.html`, `contribution.html`, `innovation.html` and `reflection.html` with "This is the "introduction" page as text (changing introduction to the content of the page".

Save the files in the `PortableApps\GIMP\menus\` folder that contains the banner image that you will use for the image map.

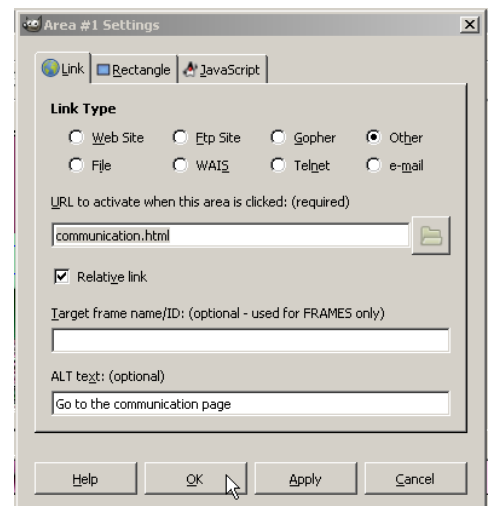
Step 1: Open `portfolio_banner_mm_dd_yy.png` from the `PortableApps\GIMP\menus\` folder.

Step 2: From the Menu bar, select `Filters | Web | Image Map...`

Step 3: At the new `<Untitled>` Image map window, click the rectangle tool



Step 4: Move the cursor onto the image, and click and drag a rectangle around the text link “Communication”. Release the mouse to open an “Area #1 Settings dialog box. Under Link Type select Web Site.



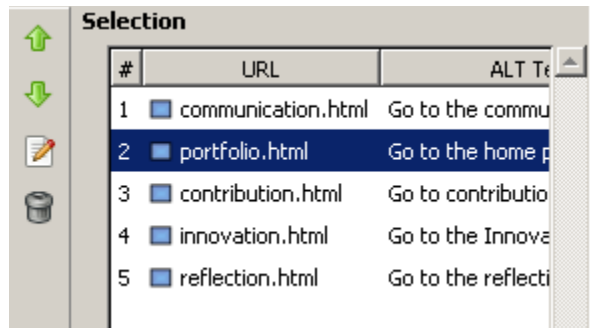
An `http://` displays in the URL text box. Click the yellow file folder to navigate to the file name of the destination Web site. Notice the selected checkbox below for *Relative link*. This indicates that the Web site is in the same location as the menu image. Select `communication.html` page you just created.

Since we do not use frames, you can ignore the Target frame name text box.

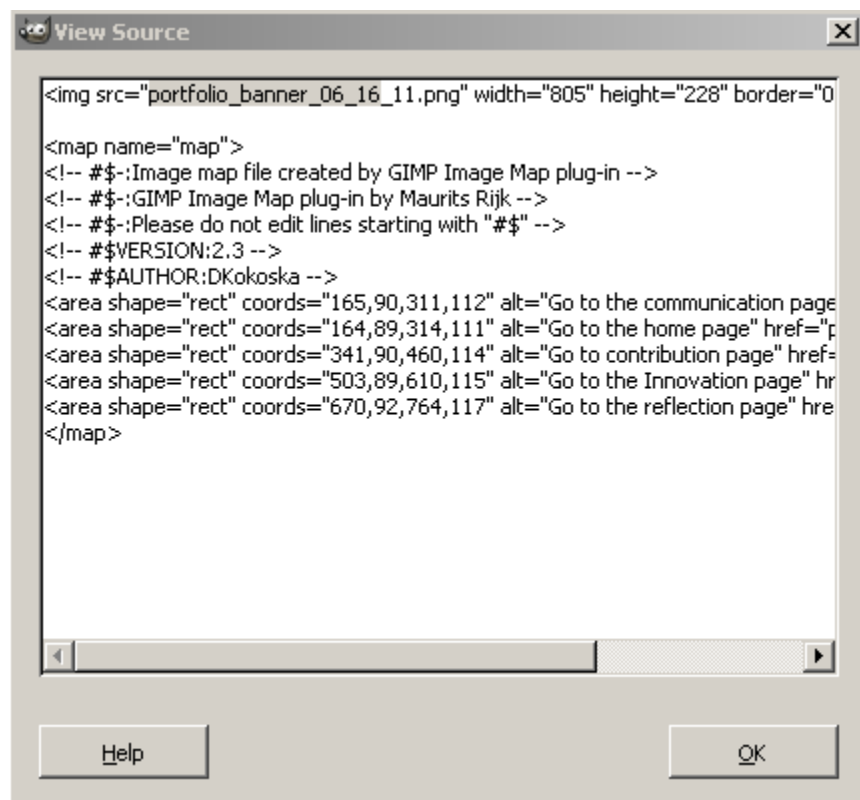
In the ALT text textbox, add an ALT tag for accessibility (i.e. “go to the communication page”).

Click the OK button.

Step 5: Continue adding rectangle hotspots for Introduction, Contribution, Innovation, and Reflection.



Step 6: From the Menu bar of the <Untitled> - Image Map screen, select View | Source...

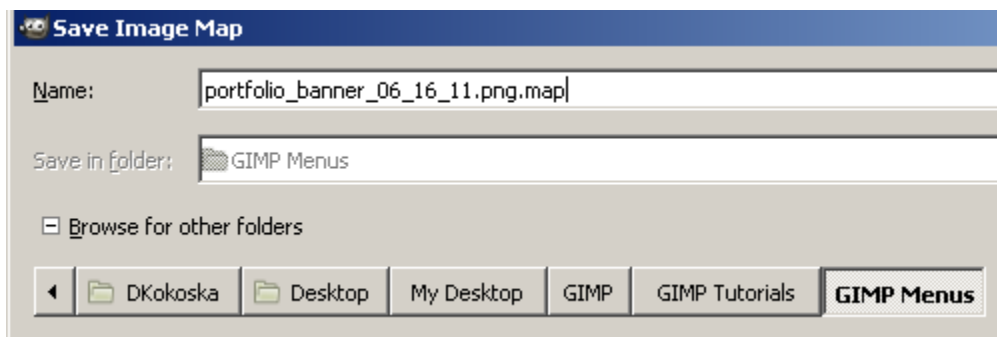


Note: notice the highlighted part of the code. Be sure that your image is in the same location (folder) as the html files.

Step 7: Click the OK button.

Step 8: At the <Untitled> - Image Map window, from the Menu bar, select File | Save.

At the Save Image Map dialog box, the name displays as



Click the Save button.

Step 9: Navigate to the folder that contains the image map and change the extension to `professional_portfolio.html`.

Step 10: Double click the `professional_portfolio.html` file to open it in the browser.

Test the links by placing your cursor over a text link (such as Contribution).



Step 11: You will need to copy the source code to each of the html pages to make the menu functional on each page.

IN THE DESIGN TUTORIAL, YOU WILL DESIGN THE HOME PAGE FOR THE PORTFOLIO.